

MICROFILMED  
JUN 11 1987

# CONVENTIONAL SIGNS

COUNTY LINE .....  
TOWNSHIP LINE .....  
CORPORATION LINE .....  
CENTER LINE .....  
FENCE LINE .....  
GUARD RAIL (EXISTING) .....  
GUARD RAIL (PROPOSED) .....  
RAILROAD .....  
UTILITY POLES .....  
TREES & STUMPS (EXISTING) EXCEPT WOODED AREAS .....

PROPERTY LINE ..... P/L  
PROPERTY LINE - SAME OWNER  
CONTIGUOUS PARCELS OF LAND ..... Z  
EXISTING RIGHT OF WAY .....  
LIMITED ACCESS ONLY ..... LA  
RIGHT OF WAY ONLY ..... R/W  
LIMITED ACCESS AND RIGHT OF WAY .....  
EASEMENT LINES FOR CHANNEL CHANGES,  
SLOPE & SEWER, AND WORKING AGREEMENTS .....

## INDEX OF SHEETS

TITLE SHEET	1
SCHEMATIC PLAN	2
TYPICAL SECTIONS	3-4
MISC. DETAILS	5
TYPICAL DRAINAGE DETAILS	6-7
GENERAL NOTES	8-9
CALCULATION - PAVEMENT QUANT.	10
CALCULATIONS - PAV'T. & RDWY. QUANT.	11
GENERAL SUMMARY - RDWY. & DRAIN.	12
GENERAL SUMMARY - DRAIN. - PAV'T. & STRUCT.	13
SUPERELEVATION TABLES	14
S. R. 44	
PLAN & PROFILE	15-27
CROSSSECTIONS	28-107
S. R. 44 - S. R. 84 INTERCHANGE	
GENERAL PLAN	108
GRADING & DRAINAGE PLAN	109-110
RAMP TYP. SECTIONS & DETAILS	111-112
RAMP "A" PLAN & PROFILE	113-114
CROSSSECTIONS	115-116
RAMP "B" PLAN & PROFILE	117-118
CROSSSECTIONS	119-120
RAMP "C" PLAN & PROFILE	121-122
CROSSSECTIONS	123-124
RAMP "D" PLAN & PROFILE	127-128
CROSSSECTIONS	129-131
RAMP PAV'T. DETAILS	132-136
S. R. 84	
TYPICAL SECTIONS & DETAILS	137
PLAN & PROFILE	138-142
CROSSSECTIONS	143-149
PAVEMENT DETAILS	150-151

MORLEY RD. - PROUTY RD. - ANDERSON LANE	
TYPICAL SECTIONS	152
MORLEY RD. - ANDERSON LANE	
PLAN & PROFILE	153
MORLEY ROAD CROSSSECTIONS	154-157
MORLEY RD. INTERSEC. DETAILS	158
PROUTY ROAD	
PLAN & PROFILE	159-160
CROSSSECTIONS	161-163
CONCORD ROAD	
CUL-DE-SACS	164
AUBURN ROAD	
TYP. SECTION & SUPERELEV. TABLE	165
PLAN & PROFILE	166-167
CROSSSECTIONS	168-173
AUBURN RD. INTERSECTION	174
MISC. PAVEMENT DETAILS	
AUBURN RD. & EXIT RAMP "A" TO S.R. 1	175
DRAINAGE	
CULVERTS & CHANNEL WORK	176-197
BRIDGES	
BRIDGE NO. LAK-44-0304-PROUTY RD.	198-203
BRIDGE NO. LAK-44-0353-KELLOGG CR.	204-209
BRIDGE NO. LAK-44-0411-S. R. 84	210-216
RIGHT OF WAY	217-228

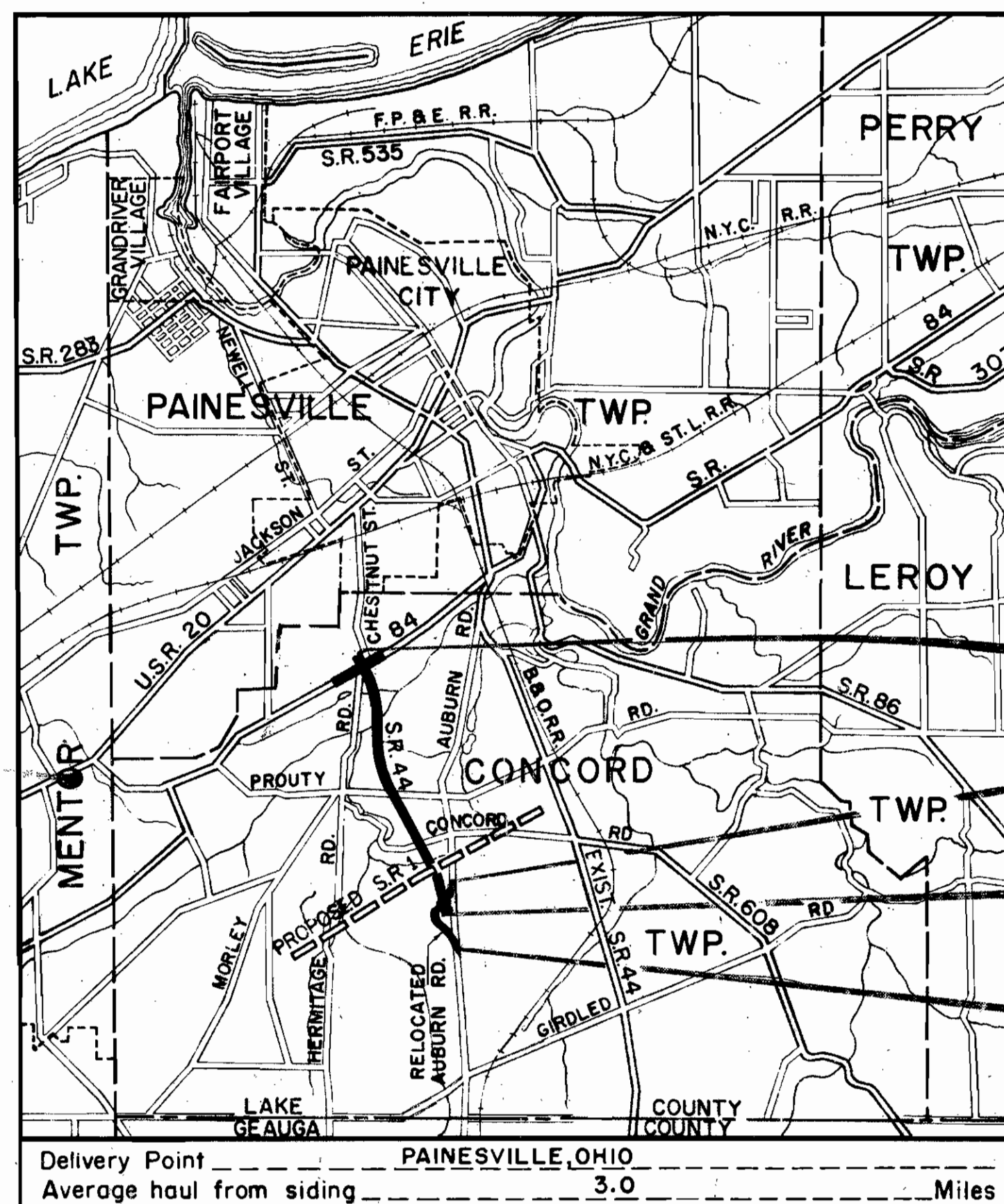
## LINE DATA

F-388(10)	
BEGIN PROJECT F-388(10)	STA. 108 + 00.00
END PROJECT F-388(10)	STA. 218 + 50.00
GROSS LENGTH PROJECT F-388(10)	11,050.00 LIN. FT.
DEDUCT FOR S. R. 1 INTERCHANGE STA. 118 + 01.12 TO STA. 131 + 17.31	1,316.19 LIN. FT.
NET LENGTH PROJECT F-388(10)	9,733.81 LIN. FT. OR 1.843 MI.
ADD FOR APPROACH WORK (FROM SHEET 9)	4,226.72 LIN. FT. OR 0.800 MI.
NET LENGTH OF WORK F-388(10)	13,960.53 LIN. FT. OR 2.644 MI.
AUBURN ROAD - S-1012(8)	
BEGIN PROJECT S-1012(8)	STA. 0 + 60.00
END PROJECT S-1012(8)	STA. 20 + 41.92
GROSS LENGTH OF PROJECT	19,811.92 LIN. FT.
DEDUCT FOR SR 44 INTERSECTION STA. 15 + 74.25 TO STA. 18 + 64.11	269.86 LIN. FT.
NET LENGTH OF PROJECT S-1012(8)	19,542.06 LIN. FT. OR 3.620 MI.
ADD FOR WORK ON APPROACHES	
STA. 0 + 00.00 TO STA. 0 + 60.00	60.00 LIN. FT.
STA. 20 + 41.92 TO STA. 23 + 33.80	291.88 LIN. FT.
NET LENGTH OF WORK S-1012(8)	351.88 LIN. FT.
TOTAL NET LENGTH OF PROJECTS F-388(10) AND S-1012(8)	11,425.87 LIN. FT. OR 2.163 MI.
TOTAL NET LENGTH OF WORK F-388(10) AND S-1012(8)	14,004.41 LIN. FT. OR 2.631 MI.

Sheets 199, 201 & 203 revised 12-15-58.

# STATE OF OHIO DEPARTMENT OF HIGHWAYS LAK-44-1.70

## LAKE COUNTY CONCORD TOWNSHIP



## LOCATION MAP

SCALE OF MILES

Portion to be improved  
Federal Roads  
State Roads  
Other Roads & Streets

SCALE

Plan  
Profile: Horizontal  
Profile: Vertical  
Cross Sections  
Others

1" = 50'  
1" = 50' Unless  
1" = 10' Noted  
1" = 10'  
As Noted

F-388(10)  
S-1012(8)

FED. RD. DIVISION	STATE	PROJECT
2	OHIO	F-388(10) S-1012(8)

LAKE COUNTY  
LAK-44-1.70

Plans prepared by:

TRYGVE HOFF & ASSOCIATES

1922 EAST 107TH STREET  
CLEVELAND, OHIO

Trygve W. Hoff, PRESIDENT  
October 15, 1958  
J. Leslie Leese, PROJECT ENG'R.

## LIMITED ACCESS

This improvement is especially designed for through traffic and has been declared a limited access highway or freeway by action of the Director of Highways in accordance with the provisions of Section 5511.02 of the Revised Code of Ohio.

The standard specifications of the State of Ohio, Department of Highways, including changes and supplemental specifications listed in the proposal shall govern this improvement.

The right of way for this improvement will be provided by the State of Ohio.

I hereby approve these plans and declare that the making of this improvement will not require the closing of the highway to traffic and that provisions for the maintenance and safety of traffic will be as set forth on the plans and estimates.

Approved: Arthur A. Leese, Jr.  
Date 10-30-58 Division Deputy Director  
Approved: G. H. Maden  
Date 11-7-58 Deputy Director of Planning & Programming  
Approved: R. H. Overman  
Date 10-31-58 Engineer of Bridges  
Approved: R. E. Shultz  
Date 10-31-58 Engineer of Location & Design  
Approved: C. E. Masten  
Date 10-31-58 Deputy Director of Design & Construction  
Approved: R. J. Thompson  
Date 11/17/58 First Assistant Director  
Approved: J. M. Vail  
Date 11/7/58 Director of Highways

DEPARTMENT OF COMMERCE  
BUREAU OF PUBLIC ROADS

APPROVED:

DIVISION ENGINEER

DATE

File No. \_\_\_\_\_  
Date of Letting \_\_\_\_\_ 195  
Contract No. \_\_\_\_\_

00149

Supplemental Prints Of	Standard Construction Drawings
BT-50-70-71E-Not 10-1-47 1-B M.H. No. 1	5-1-52 1-J-N 1
BT-71P 3-2-53 1-B M.H. No. 1	1-3-53 1-J 1
DR-1 1-3-55 1-12	7-1-54 1-R-1 1
F 1 4-57 1-14C	1-21-52 5-2 1
G 707 6-1-53 1-15N 2	1-55 5-2 1
I-12-54 1-15N 2	4-57 1-33 1
I 92-5-2-24 8E 8-1-56 2-1-23	8-56 AR 57
I-1-C-6 No. 6 5-1-52 1-L 1	5-1-55 1-A 1

Supplemental Specifications
B-19 3E 8-1-57
5-1-57 6-8-57
5-1-57 6-8-57
1-3 REV. 2-6-57
B-21 REV. 7-21-57
9 C-2 1-57



MICROFILMED  
JUN 11 1987

FED. RD. DIVISION	STATE	PROJECT
2	OHIO	

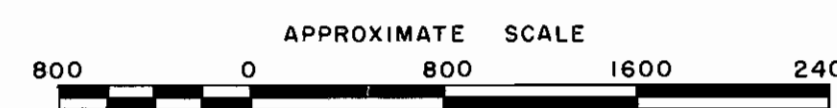
2  
225

LAKE COUNTY  
LAK-44-170



- SYMBOLS**
- ① DEAD END ROAD
  - ② ROAD CLOSED
  - CUL-DE-SAC (CONCORD ROAD)

NOTE:  
SEE GENERAL NOTES, SHEET NO. 3  
FOR MAINTENANCE OF TRAFFIC



TRYGVE HOFF & ASSOCIATES  
ENGINEERS  
1922 EAST 107TH STREET CLEVELAND, OHIO

# SCHEMATIC PLAN

LAKE COUNTY  
LAK-44-170

DESIGNED	DRAWN	TRACED	CHECKED	REVIEWED	DATE	REVISED
	GOH				10/14/53	



MICROFILMED  
JUN 12 1987

FED. RD. DIVISION	STATE	PROJECT
2	OHIO	

204  
228

LAKE COUNTY  
LAK-44-170

### PROPOSED STRUCTURES

TYPE: CONTINUOUS STEEL BEAM WITH REINF.  
CONC. DECK & SUBSTRUCTURE  
SPANS: 36.0', 45.0', 36.0', EAST & WEST BRIDGES  
ROADWAY: 39'-8" f/f of 1'-0" CURBS  
EAST & WEST BRIDGES  
LOAD FREQUENCY: CF=2000(57) ADEQUATE FOR  
A.A.S.H.O. ALTERNATE LOADING  
WEARING SURFACE: 1" MONOLITHIC CONC.  
APPROACH SLABS: AS-1-54 25' LONG  
ALIGNMENT: TANGENT  
SKEW: 30°-00' L.F.

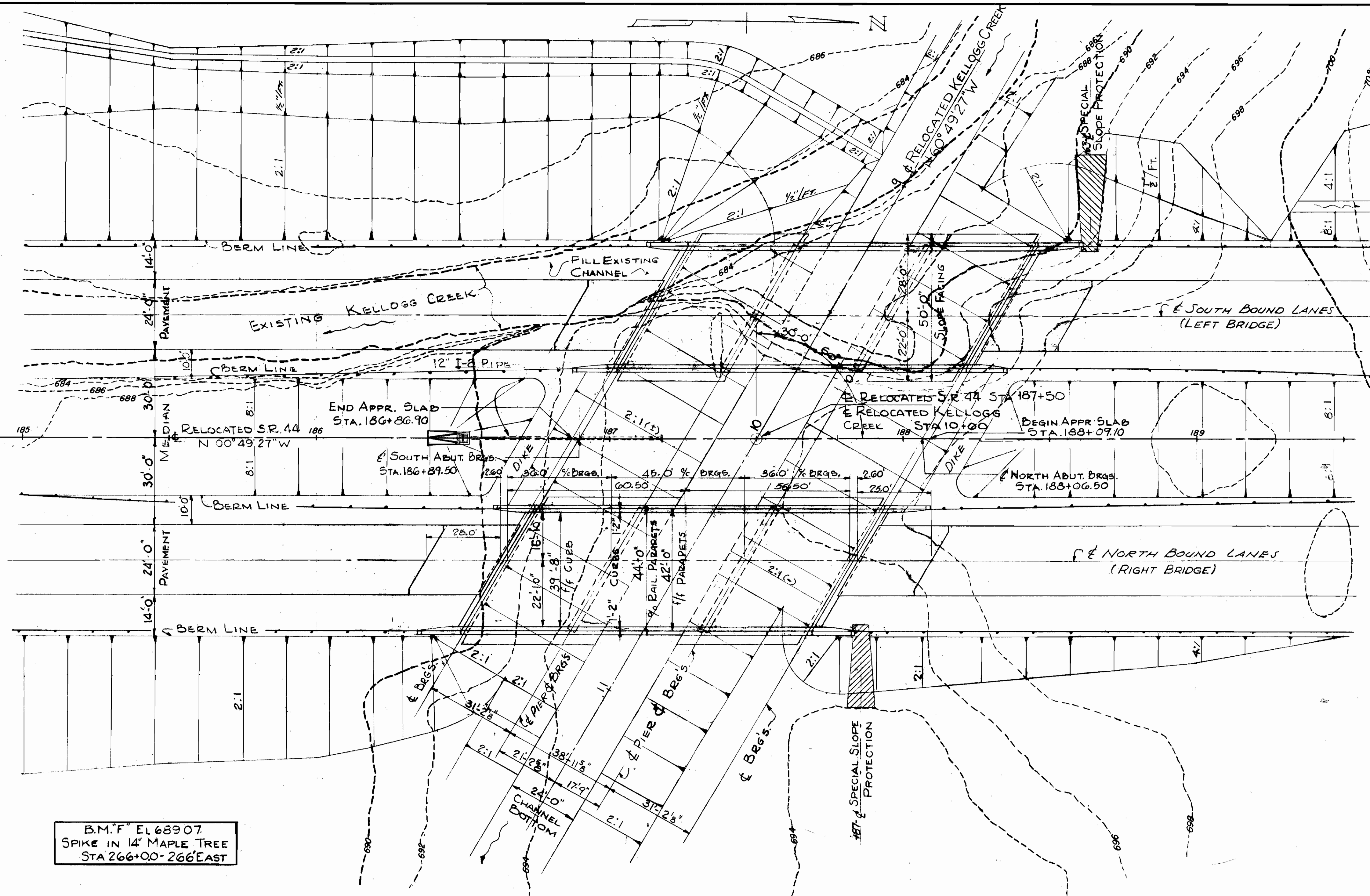
DRAINAGE AREA = 12.2 Sq. Mi.  
Q<sub>25</sub> = 1700 CFS } FROM U.S.G.S.  
Q<sub>50</sub> = 1950 CFS }  
LOCATION: 41°-41'-08" LAT; 81°-15'-19.5" LONG.  
U.S.G.S. MENTOR QUAD (7.5 MIN SERIES)

### FOUNDATION SOUNDINGS:

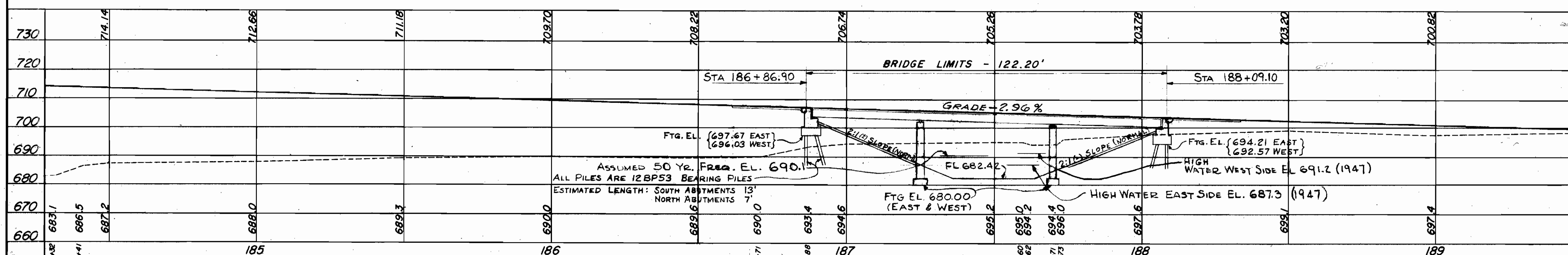
FOUNDATION DESIGN AND FOUNDATION  
QUANTITIES ARE BASED ON A STUDY  
OF STANDARD PENETRATION TESTS  
AND SOIL SAMPLING MADE AT THE SITE.  
THIS INFORMATION MAY BE INSPECTED  
IN THE OFFICE OF THE BUREAU OF  
BRIDGES IN COLUMBUS OR IN THE  
DIVISION OFFICE, BUT THE STATE  
DOES NOT GUARANTEE THE ACCURACY  
THEREOF.

### NOTE:

FOR DETAIL OF SPECIAL SLOPE PROTECTION  
SEE SHEET G



B.M. 'F' EL 689.07  
SPIKE IN 14" MAPLE TREE  
STA 266+00-266' EAST



TRYGVE HOFF & ASSOCIATES

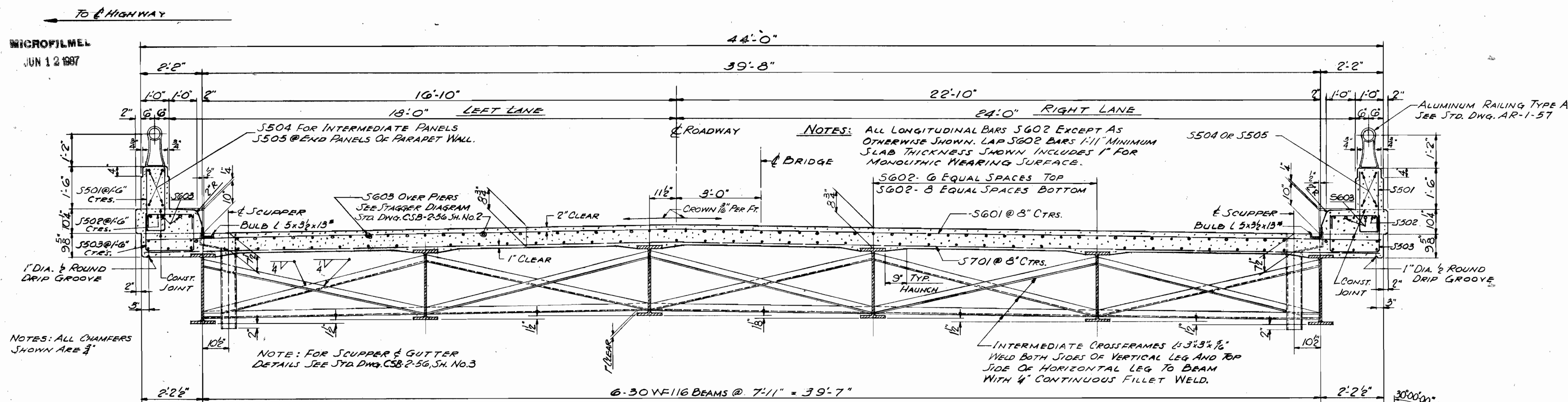
1922 EAST 107TH STREET CLEVELAND, OHIO

### SITE PLAN

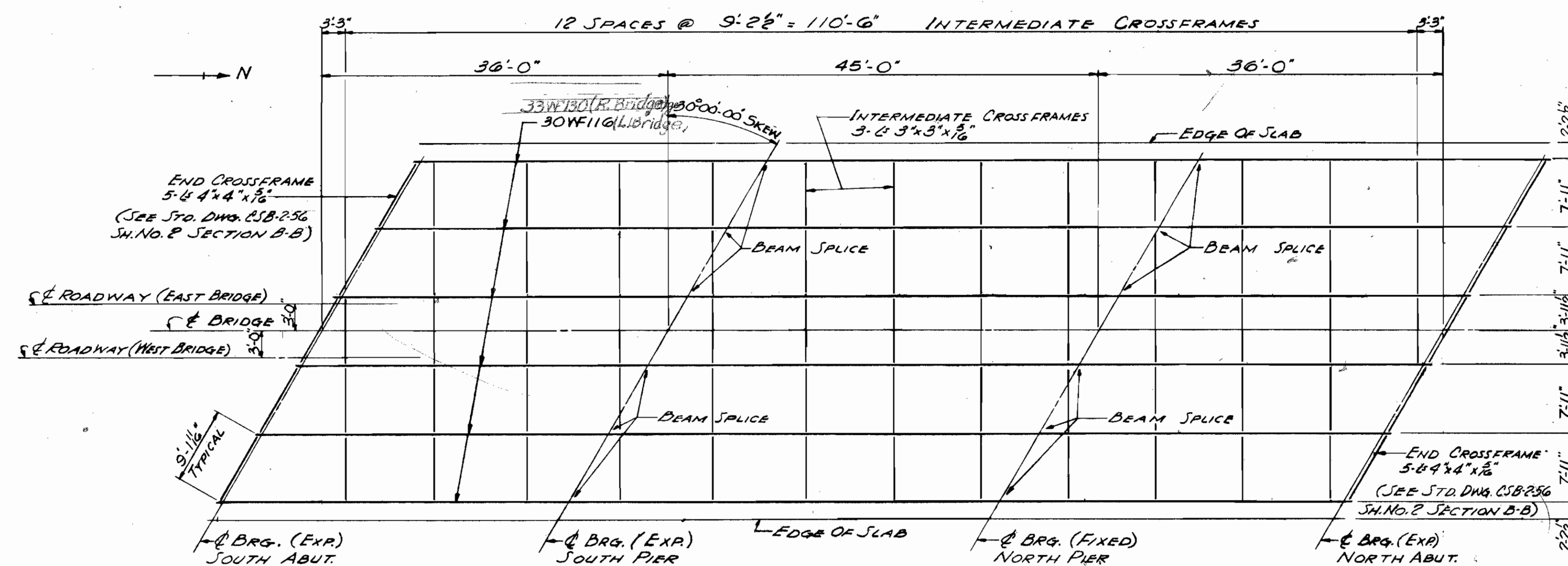
BRIDGE NO. LAK-44-0353, L&R  
S.R. 44 OVER KELLOGG CREEK  
LAKE COUNTY S.R. 44  
STA. 187+50

DESIGNED	DRAWN	TRACED	CHECKED	REVIEWED	DATE	REVISED
JWP	JWP		Ad	T.L.L.	10/11/58	

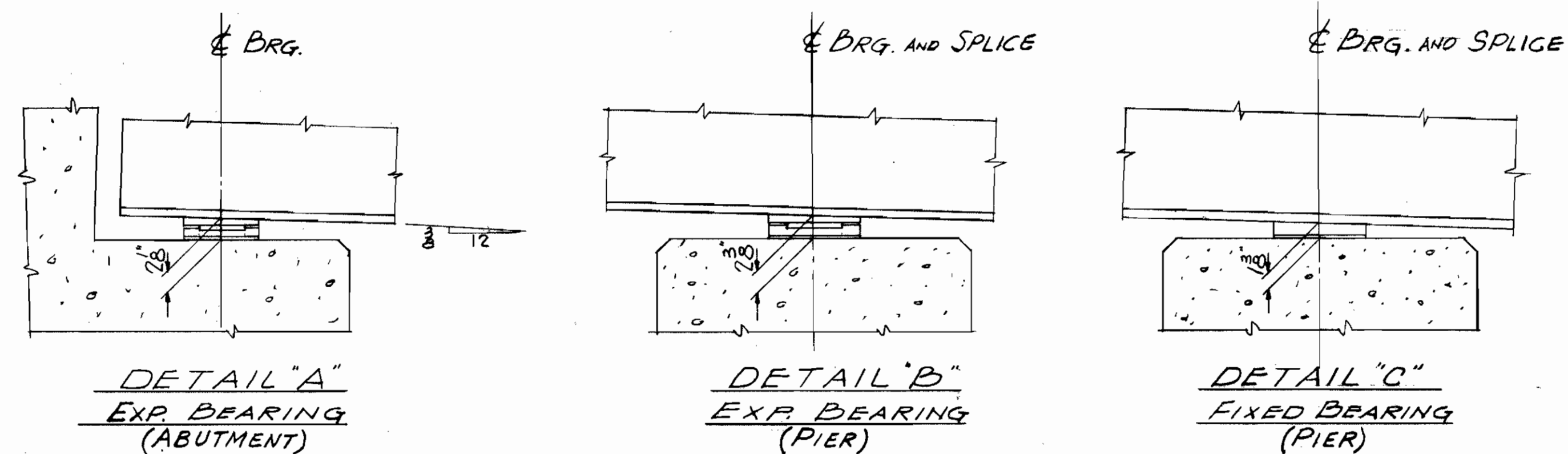




TRANSVERSE SECTION (RIGHT HALF ONLY SHOWN)



## FRAMING PLAN

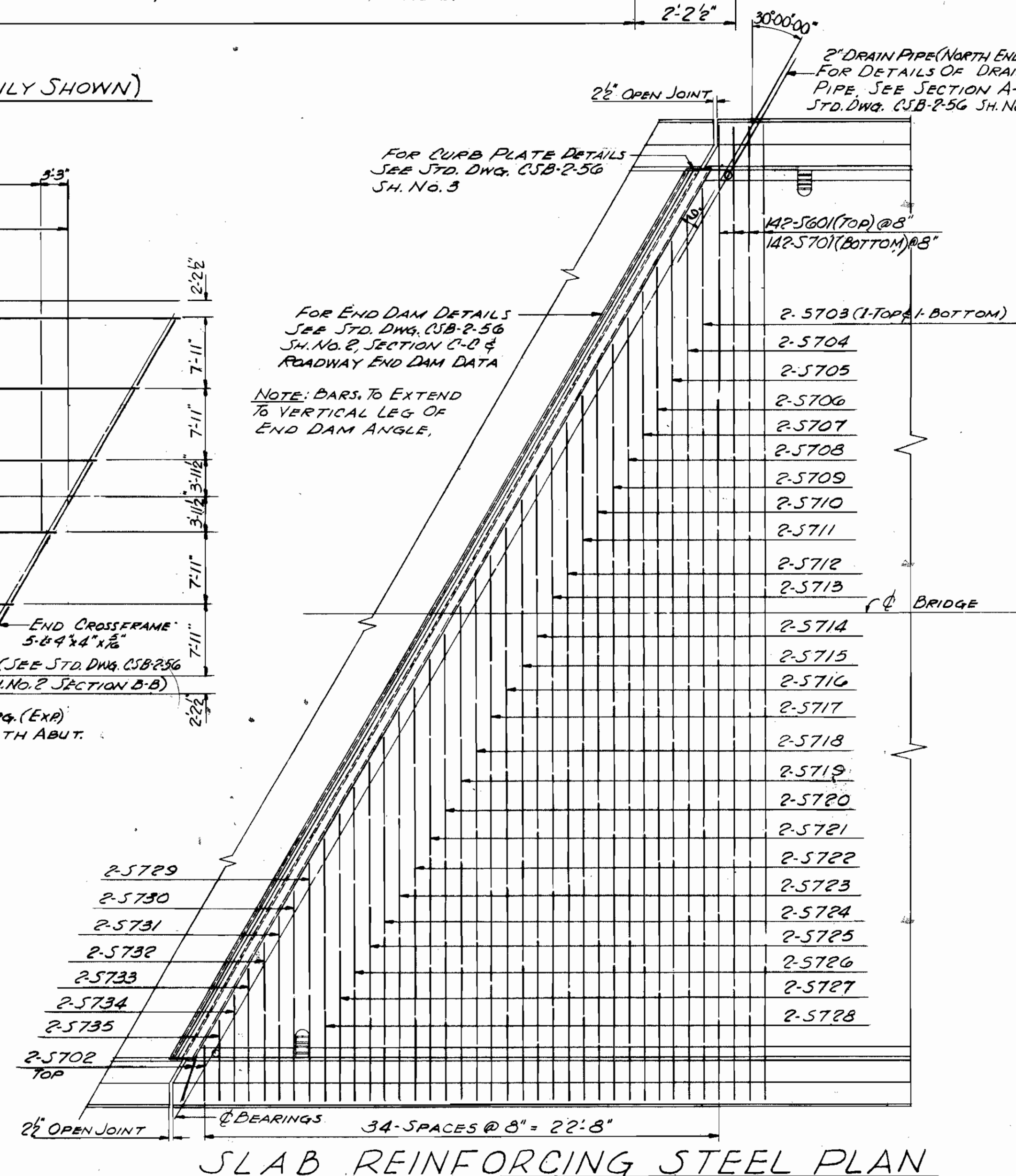


### BEAM SPLICE WELDING PROCEDURE

BUTT-WELD THE BEAM FLANGES & WEB, USING THE FOLLOWING SEQUENCE: MAKE ONE PASS ON EACH FLANGE, THEN ONE ON THE WEB, REPEAT UNTIL WELDS ARE COMPLETED. FOR DETAILS SEE STD. DWG. USB-P-56 SH No. 3. NO SPlice PLATES ARE REQUIRED.

## NOTES

FOR NOTES SEE DWG. 215  
FOR WELDED BUTT JOINT IN SUPERSTRUCTURE  
END DAM ANGLES AT E OF ROADWAY, SEE  
STD. DWG. CSB-2-56 SH. NO. 2.



SLAB REINFORCING STEEL PLAN

TRYGVE HOFF & ASSOCIATES  
ENGINEERS  
1922 EAST 107TH STREET CLEVELAND, OHIO

SUPERSTRUCTURE DETAILS

BRIDGE NO. LAK-44-0353, L&R  
SR. 44 OVER KELLOGG CREEK  
LAKE COUNTY SR. 44  
STA. 187+50

SCALE			DATE		
DESIGNED	DRAWN	TRACED	CHECKED	REVIEWED	DATE
C.A.T.	C.A.T.		A.J.	GL.P.	8-15-58